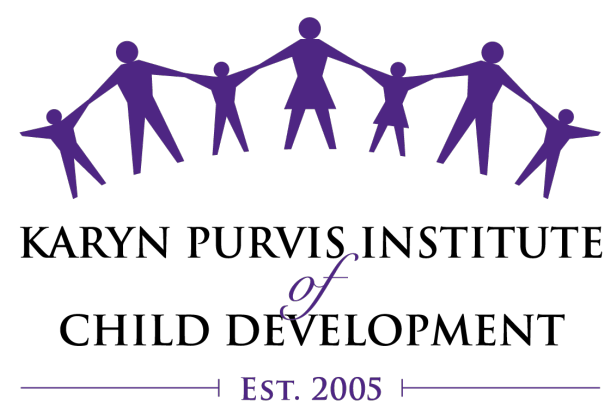




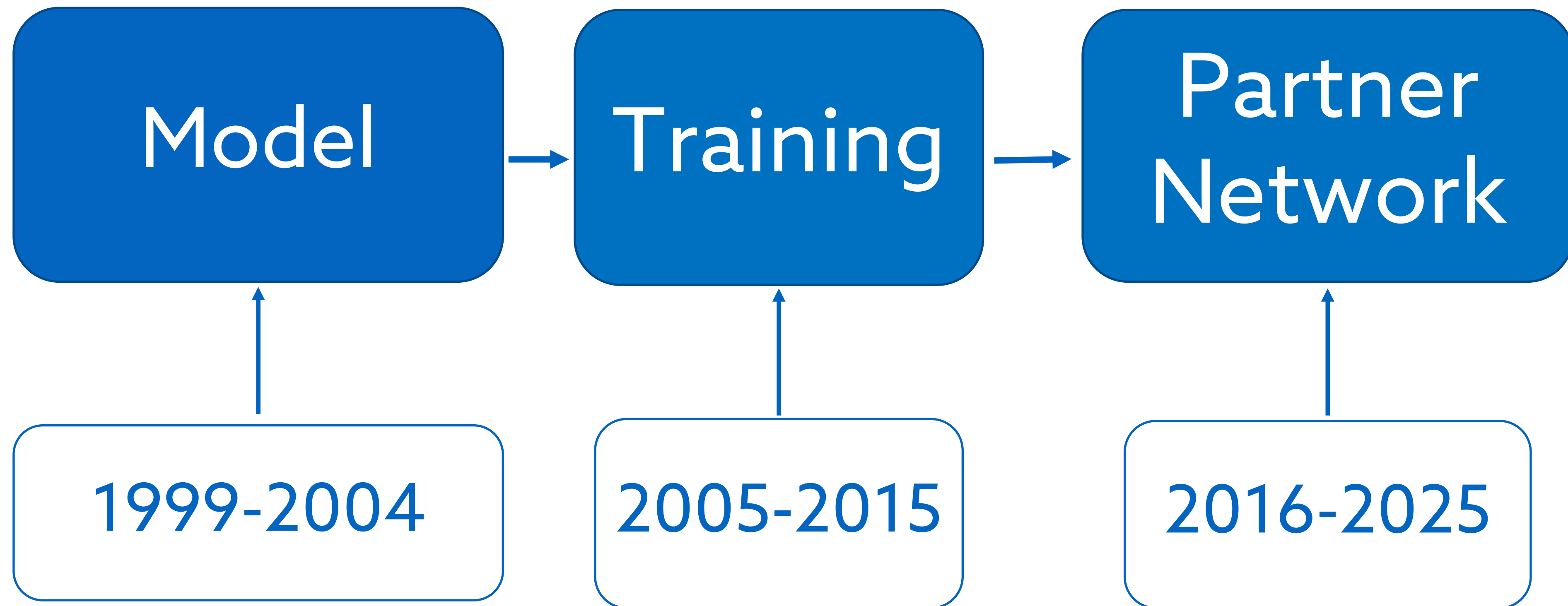
A PARADIGM SHIFT

Daren Jones



EMPOWERED
TO CONNECT
CONFERENCE

HISTORY OF OUR WORK IN THREE PHASES



MISSION AND VISION

Mission

We will bring hope and healing to *all* children who come from hard places.

Vision

We will have the best trauma-informed training and resources found anywhere in the world.

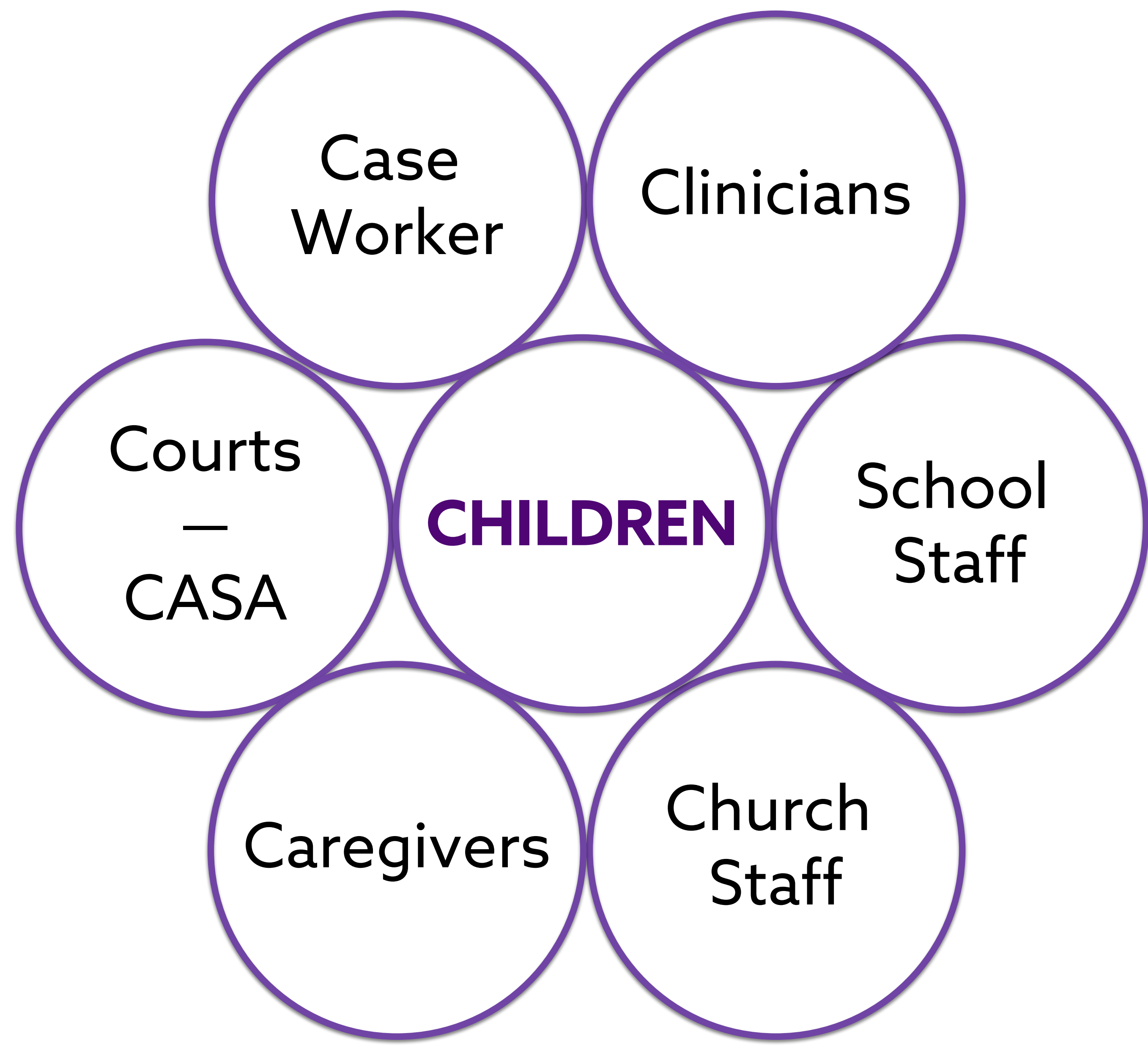
BHAG

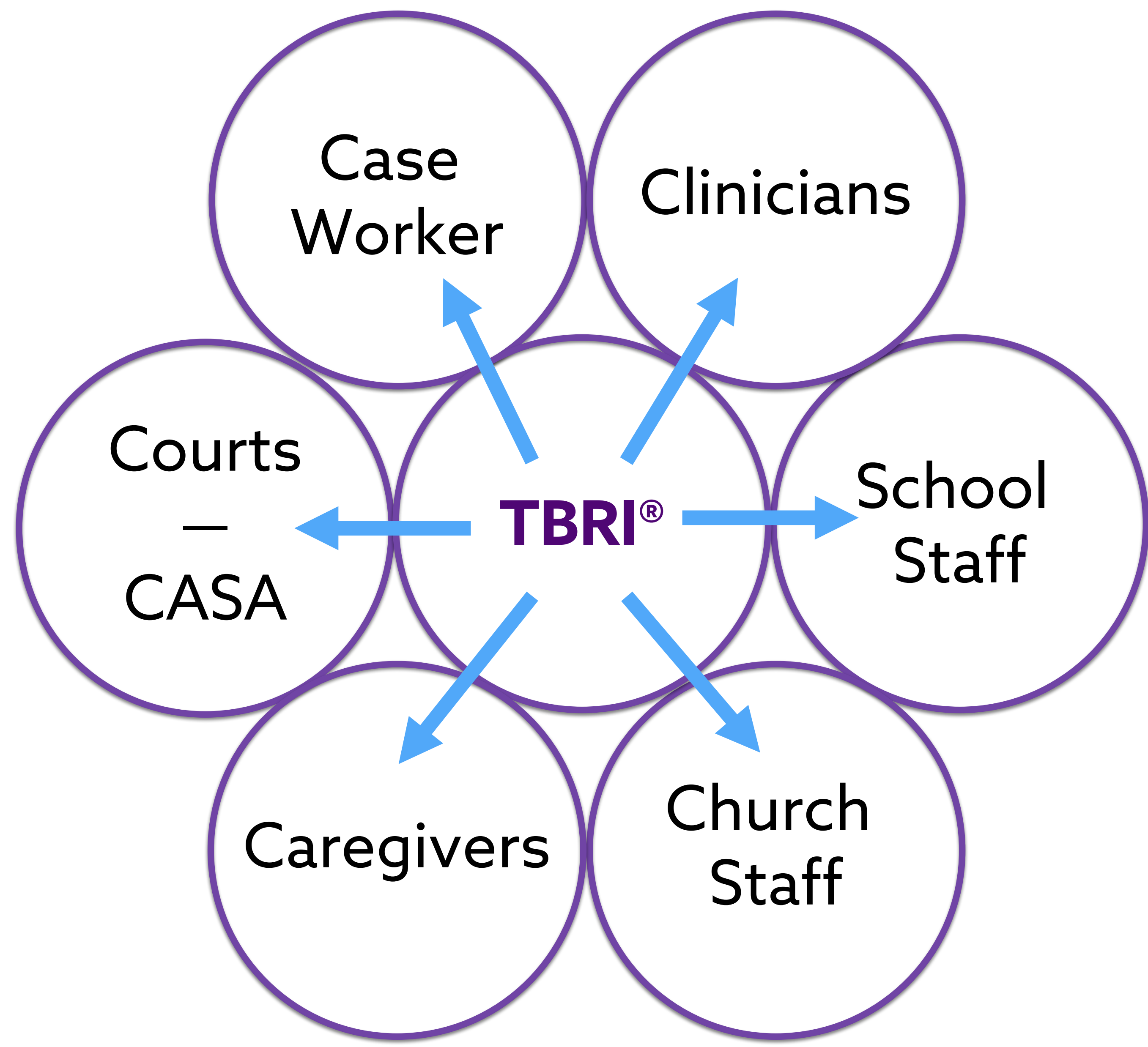
By 2025 we will have a network of dedicated partners spanning 25 states and 25 countries

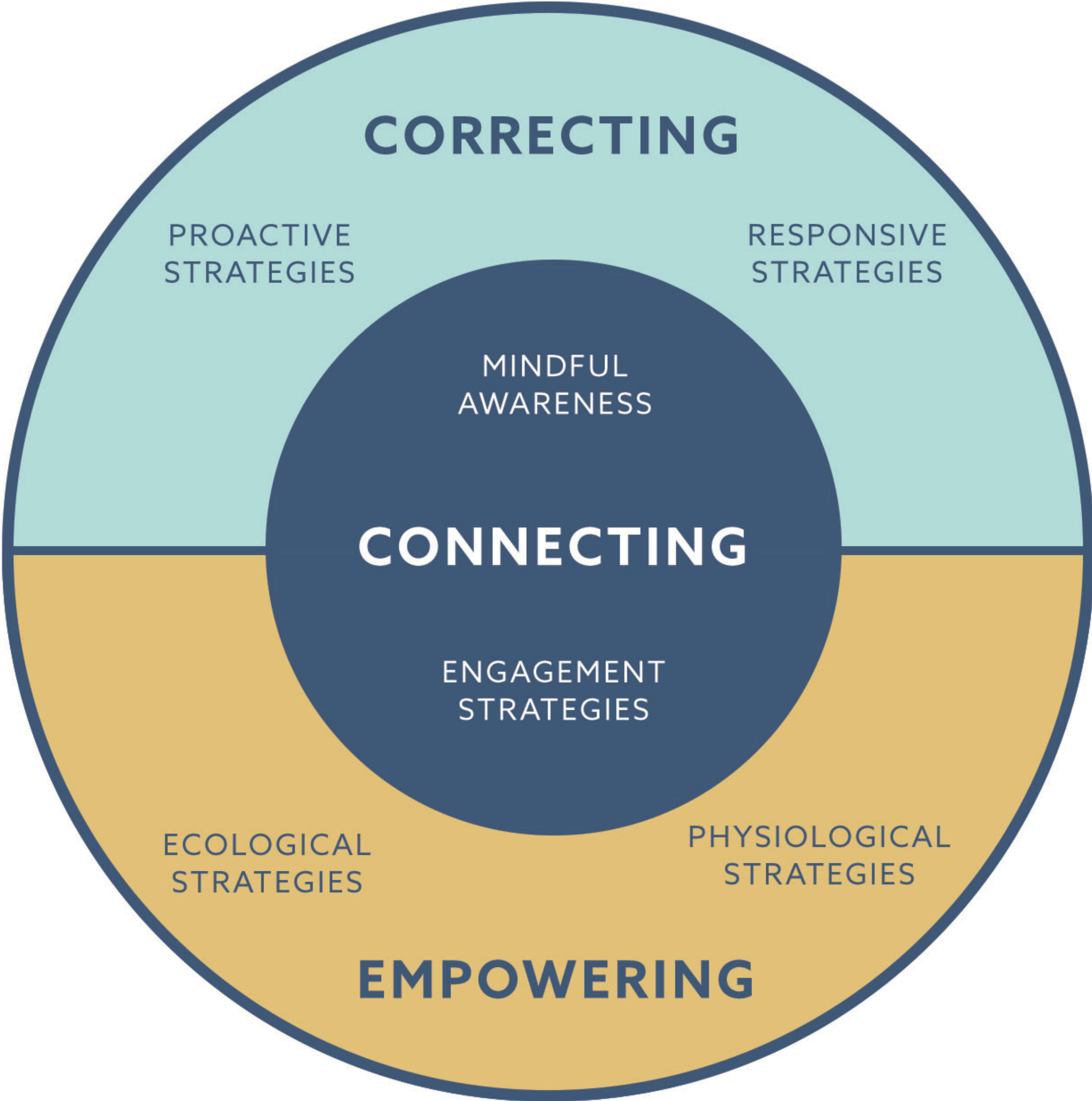
WHAT IS TBRI®?

- Attachment-based
- Trauma-informed
- Whole-child
- Evidence-based
- Multi-systemic

TRUST-BASED
RELATIONAL
INTERVENTION®

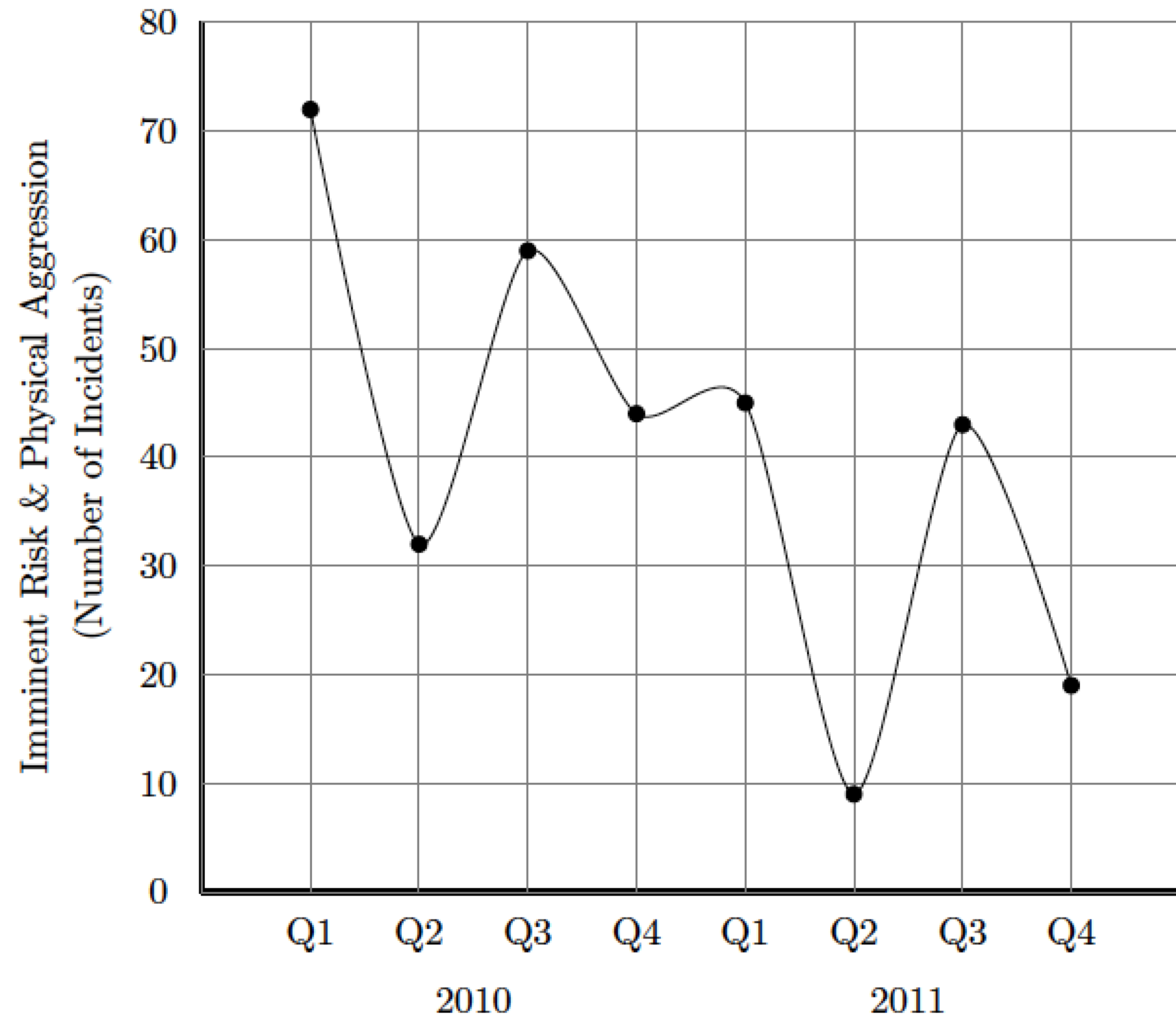






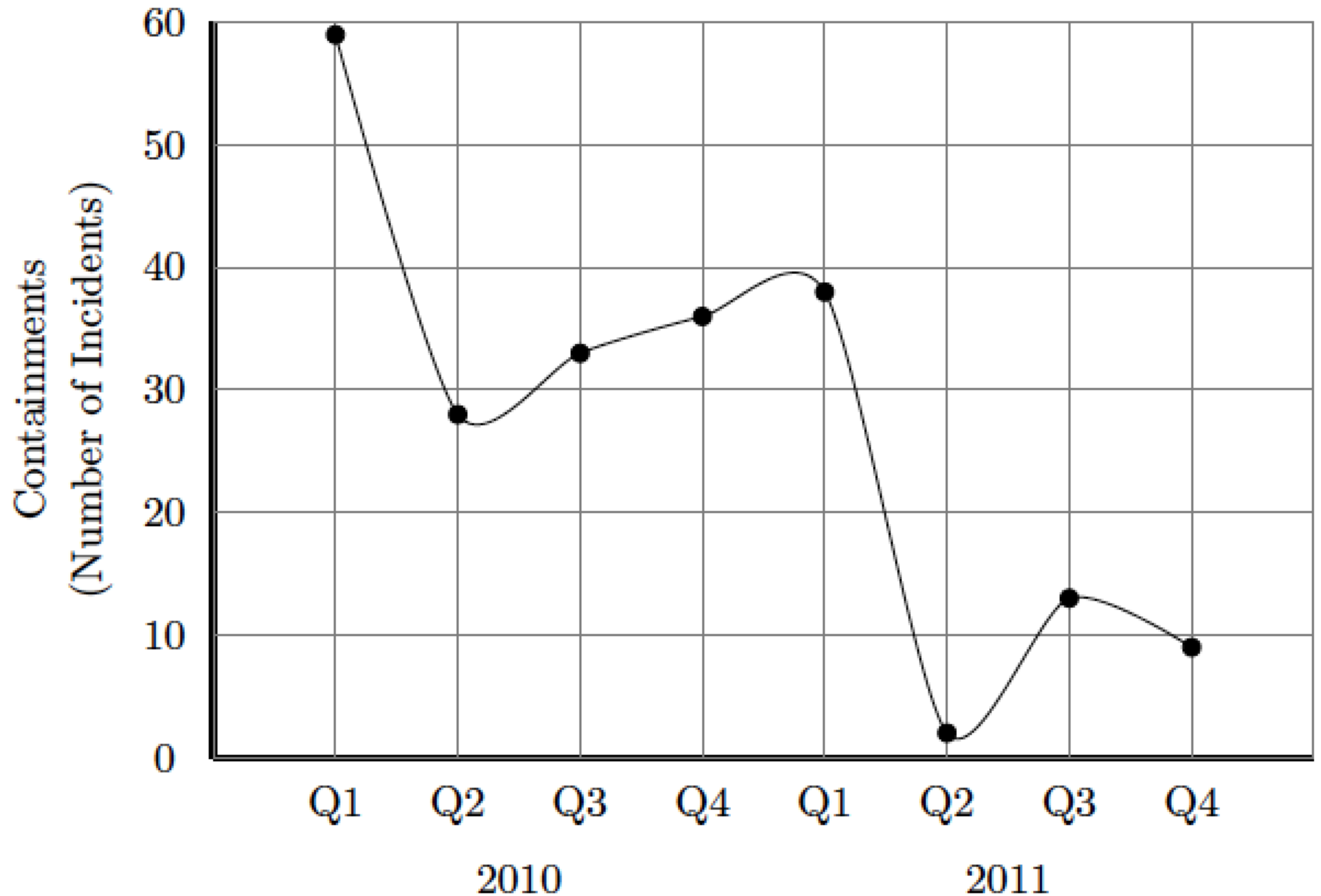
TBRI IMPACTS BEHAVIORS: FIGURE 1

Figure 1: Frequency of reported incidents defined as "imminent risk and physical aggression," plotted by quarter over a two-year period.



TBRI IMPACTS BEHAVIORS: FIGURE 2

Figure 2: Frequency reported containments, plotted by quarter over a two-year period.



TBRI IMPACTS BEHAVIORS: FIGURE 3

Figure 3: Frequency of "other incidents," plotted over a two-year period; the most common incidents in this category were minor client injury, significant disruptive behavior, and verbal aggression.

